



# DELL 24, 27 AND 32 USB-C HUB MONITORS

## P2423DE P2723DE P3223DE

Pure productivity



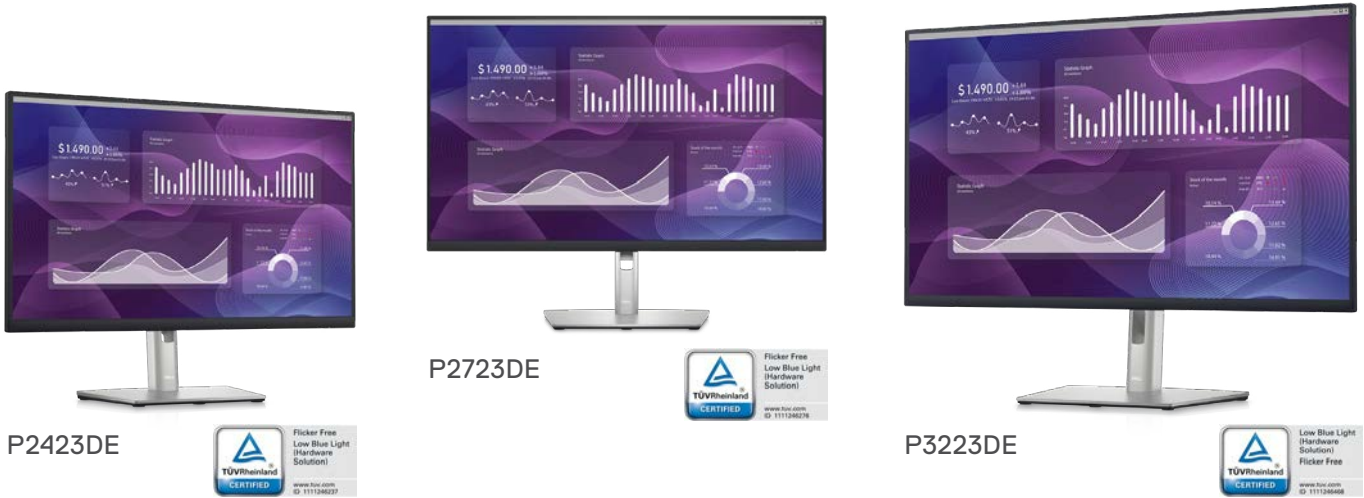
**DELL** Technologies

**THE WORLD'S # 1  
MONITOR COMPANY\***

# P2423DE, P2723DE, P3223DE

## Pure productivity

Experience productivity, power and comfort with these QHD resolution hub monitors.



### See more details, get more done

Experience your more details and clarity in you work. These 23.8", 27" and 31.5" monitors with 2560 x 1440 QHD resolution enable you to multitask efficiently by displaying multiple applications.

### Stay connected in any workspace

Be it hotdesking in the office or at home, you can streamline your workspace with these USB-C Hub monitors that wake and power your laptop with up to 90W, connect you to the Ethernet and a host of other devices, and are thoughtfully designed with a cable management system that reduces workspace clutter.

### Uncompromised color and comfort

Optimize eye comfort with ComfortView Plus, a built-in low blue light screen that reduces harmful blue light emissions without sacrificing color. Easy-to-use with full adjustability for better comfort all day.

# P2423DE, P2723DE, P3223DE

### See and accomplish more

Enhance work efficiency with QHD (2560 x 1440) resolution on a 23.8", 27" or 31.5" monitor.

### Productivity hub

Stay powered and connected with up to 90W power delivery via USB-C and extensive connectivity options like RJ45 for Ethernet connectivity — all in a clutter-free setup.

### Color consistency comes standard

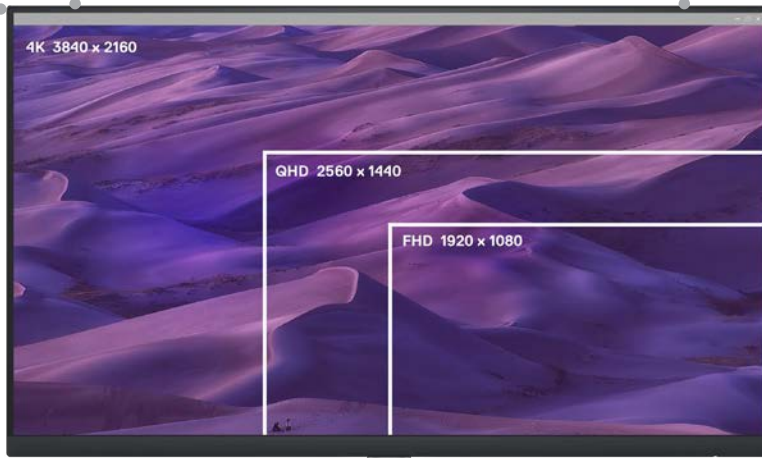
See consistent, vibrant colors across a wide viewing angle enabled by In-Plane Switching (IPS) technology. With 99% sRGB coverage, you get precise colors right out of the box.

### Enhanced manageability

MAC Address pass-through<sup>1</sup>, PXE Boot and Wake-on-LAN are conveniently built in.

### Manage multiple tasks

Enhance efficiency by 21%<sup>2</sup> by adding a second monitor via Dell Express Daisy Chaining through DisplayPort connectivity.



Optimize eye comfort with built-in **ComfortView Plus** that reduces harmful blue light emissions without sacrificing color performance.

### Adjust to your comfort

Tilt, swivel, pivot, and height adjustable (150mm max)

### Easy-to-use joystick control

To navigate through the On-Screen Display (OSD) menu

### Extensive connectivity

Easily connect to a variety of devices with extensive connectivity ports, including display port, HDMI, and quick access SuperSpeed 5Gbps USB ports.

### Functional design

Features 3-sided ultrathin bezel design, a small base and improved cable management for a clutter free desk at your home or at your office.

### Environmental standards

ENERGY STAR<sup>®</sup>  
TCO Certified Edge,  
EPEAT<sup>®</sup> Gold registered

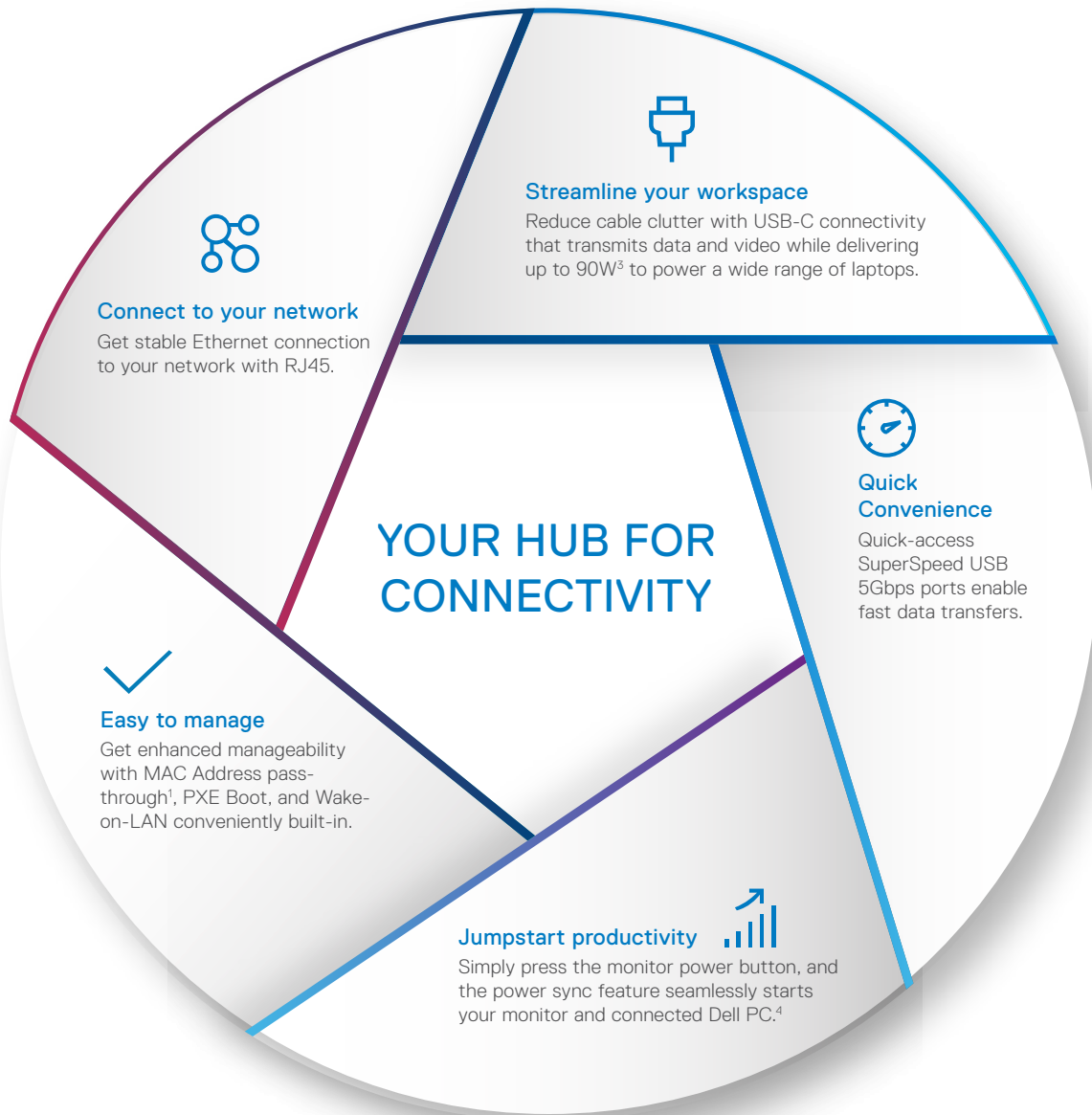
### Jumpstart productivity

Power up your Dell PC through your monitor even with the laptop lid is closed with Dell Power Sync, available on select Dell PCs.\*\*

# P2423DE, P2723DE, P3223DE

## Connectivity that drives productivity

These USB-C Hub monitors offer extensive connectivity options including USB-C (up to 90W power delivery), RJ45 for wired Ethernet access, super speed USB for fast data transfers, and more.



# P2423DE, P2723DE, P3223DE

## Designed for you

These sleek monitors feature a small base and cable management design that hides cables in the monitor riser, for a clutter-free desk space at your office or home office.



### Designed with purpose

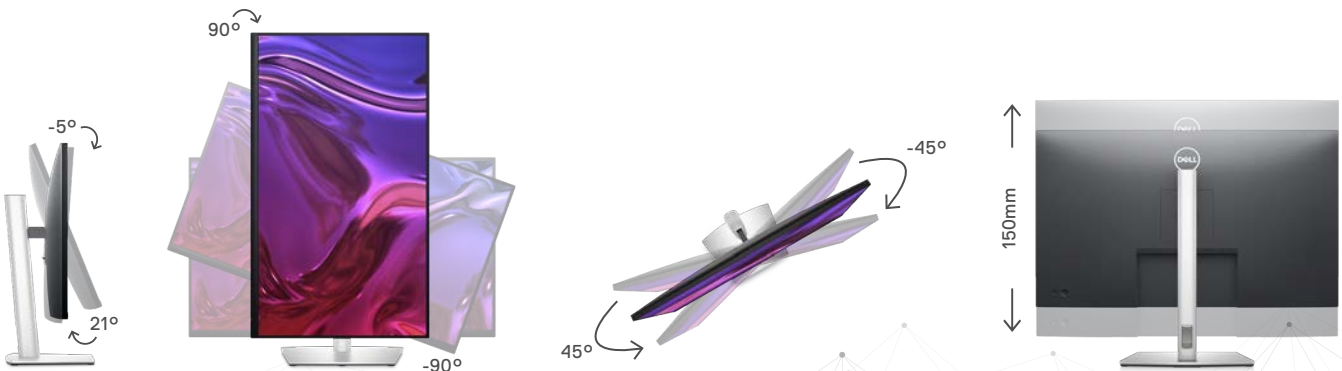
The small base and elegant cable management system hide cords within the monitor riser.

### Easy-to-use joystick control

Navigate the on-screen menu and adjust settings with the easy-to-use joystick control.

### Adjust to your comfort

Experience made-for-you comfort by tilting, pivoting, swiveling, and adjusting the height of your monitor (150mm max).



# P2423DE, P2723DE, P3223DE

## Enhanced productivity

Dell Display Manager enhances everyday productivity through comprehensive management tools, giving you optimal front of screen experience, efficient display management, and easy, effortless multitasking.

### Productive at every level

Easy Arrange allows you to easily tile multiple applications across one or more screens with 38 pre-set window partitions and the ability to personalize up to five windows, giving you improved multitasking abilities.

### The key to convenience

Shortcut keys can save you even more time, letting you easily configure your display management settings so you can get to work faster.

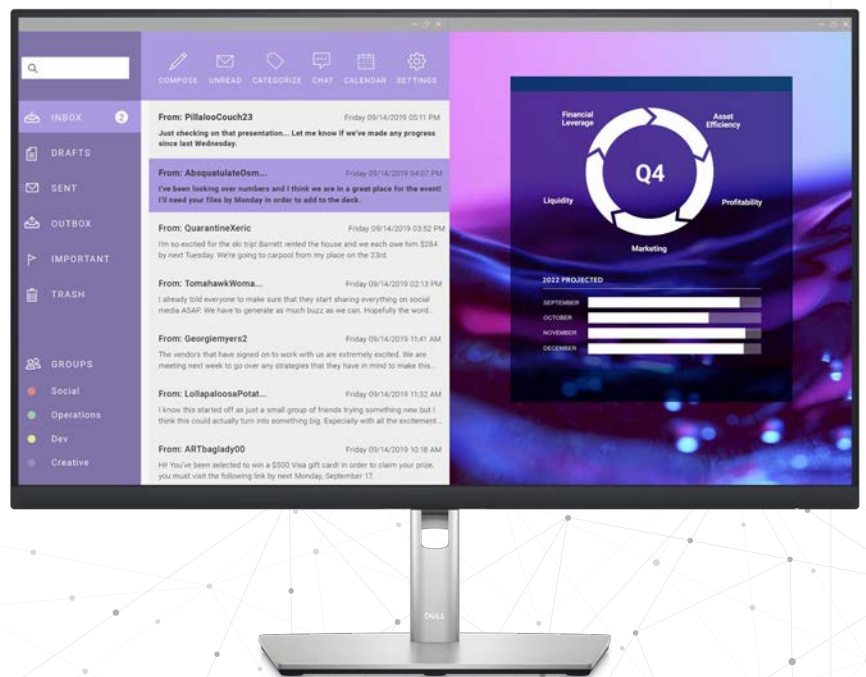
### Seamless transitions

The auto-restore feature remembers where you left off, so applications will go back to where you left them, even after you've unplugged.

### More ways to manage

Asset management reports allow IT managers to quickly capture and track monitor information as well as configure multiple monitors at once through a single setup.

Learn more about [Dell Display Manager](#).





## RECOMMENDED ACCESSORIES



### Dell Single Monitor Arm | MSA20

Enjoy a virtually tool-free assembly and easy installation with this Dell Single Monitor Arm – MSA20. Dell Quick Release lets you snap on the Dell P Series monitor onto the arm simply without tools.



### Dell Pro Wireless Headset | WL5022

Enjoy wireless freedom away from your PC with this Teams certified headset that offers convenient call controls. Switch seamlessly across your PC, tablet or smartphone and enjoy superior audio clarity on the go.



### Dell Premier Multi-Device Wireless Keyboard and Mouse | KM7321W

Multitask seamlessly across three devices with this premium full-sized keyboard and sculpted mouse combo with programmable shortcuts and 36-month battery life.<sup>5</sup>

# P2423DE, P2723DE, P3223DE

## Sustainability on Dell Monitors



### Environmental standards

This monitor is made of 85% post-consumer recyclable plastic in the design<sup>6</sup> and meets the latest environmental standards such as ENERGY STAR<sup>®</sup>, and TCO Certified Edge, and is EPEAT<sup>®</sup> Gold<sup>7</sup> registered.

### Eco-conscious packaging

Designed with the environment in mind, Dell commercial monitors come in 100% recyclable cardboard packaging.<sup>8</sup>

### Energy conservation

Save energy when your monitor is not in use with PowerNap<sup>9</sup>, a feature that dims or puts your monitor to sleep when it's not in use.

## P SERIES MONITORS

# P2423DE, P2723DE, P3223DE

### DELL 24 USB-C HUB MONITOR - P2423DE TECHNICAL SPECIFICATION

### DELL 27 USB-C HUB MONITOR - P2723DE TECHNICAL SPECIFICATION

### DELL 32 USB-C HUB MONITOR - P3223DE TECHNICAL SPECIFICATION

<b>DIAGONAL VIEWING SIZE</b>	604.50 mm (23.80 inches)	684.70 mm (26.96 inches)	800.01 mm (31.5 inches)
<b>PRESET DISPLAY AREA (H X V)</b>	526.85 mm x 296.35 mm (20.74 in. x 11.67 in.)	596.74 mm x 335.66 mm (23.49 in. x 13.21 in.)	698.11 mm x 392.69 mm (27.48 in. x 15.46 in.)
<b>MAXIMUM PRESET RESOLUTION</b>	2560 x 1440 @ 60 Hz	2560 x 1440 at 60 Hz	2560 x 1440 at 60 Hz
<b>ASPECT RATIO</b>	16:9	16:9	16:9
<b>PIXEL PITCH</b>	0.2058 mm x 0.2058 mm	0.2331 mm x 0.2331 mm	0.2727 mm x 0.2727 mm
<b>PIXEL PER INCH (PPI)</b>	123	109	93
<b>BRIGHTNESS</b>	300 cd/m <sup>2</sup> (typical)	350 cd/m <sup>2</sup> (typical)	350 cd/m <sup>2</sup> (typical)
<b>COLOR SUPPORT</b>	Color gamut: sRGB 99% (typical) Color depth: 16.7 Million	Color gamut: sRGB 99% (typical) Color depth: 16.7 Million	Color gamut: sRGB 99% (typical) Color depth: 1.07 billion colors
<b>CONTRAST RATIO</b>	1000:1 (typical)	1000:1 (typical)	1000:1 (typical)
<b>VIEWING ANGLE</b>	178°/178°	178°/178°	178°/178°
<b>RESPONSE TIME</b>	5 ms (Fast mode), 8 ms (Normal mode)	5 ms (Fast mode), 8 ms (Normal mode)	5 ms (Fast mode), 8 ms (Normal mode)
<b>PANEL TYPE</b>	In-Plane Switching Technology	In-Plane Switching Technology	In-Plane Switching Technology
<b>DISPLAY SCREEN COATING</b>	Anti-Glare	Anti-Glare	Anti-Glare
<b>BACKLIGHT TECHNOLOGY</b>	White LED edgelight system	White LED edgelight system	White LED edgelight system
<b>COMFORTVIEW PLUS WITH FLICKER-FREE SCREEN</b>	Yes	Yes	Yes
<b>DELL DISPLAY MANAGER COMPATIBILITY</b>	Yes	Yes	Yes
<b>REMOTE ASSET MANAGEMENT</b>	Yes, via Dell Command   Monitor	Yes, via Dell Command   Monitor	Yes, via Dell Command   Monitor
<b>GSA/TAA</b>	Yes	Yes	Yes
<b>OPTIONAL SOUNDBAR</b>	SB521A or SB522A	SB521A or SB522A	SB521A or SB522A
<b>CONNECTORS</b>	<ul style="list-style-type: none"> <li>1 x HDMI port version 1.4 (HDCP 1.4)</li> <li>1 x DisplayPort version 1.4 (HDCP 1.4)</li> <li>1 x DisplayPort (Out) with MST (HDCP 1.4)</li> <li>1 x USB-C upstream port (Alternate mode with DisplayPort 1.4, Power Delivery up to 90 W)</li> <li>4 x SuperSpeed USB 5Gbps (USB 3.2 Gen1) downstream port</li> <li>1 x RJ45 port</li> </ul>	<ul style="list-style-type: none"> <li>1 x HDMI port version 1.4 (HDCP 1.4)</li> <li>1 x DisplayPort version 1.4 (HDCP 1.4)</li> <li>1 x DisplayPort (Out) with MST (HDCP 1.4)</li> <li>1 x USB-C upstream port (Alternate mode with DisplayPort 1.4, Power Delivery up to 90 W)</li> <li>4 x SuperSpeed USB 5Gbps (USB 3.2 Gen1) downstream port</li> <li>1 x RJ45 port</li> </ul>	<ul style="list-style-type: none"> <li>1 x HDMI port version 1.4 (HDCP 1.4)</li> <li>1 x DisplayPort version 1.4 (HDCP 1.4)</li> <li>1 x DisplayPort (Out) with MST (HDCP 1.4)</li> <li>1 x USB-C upstream port (Alternate mode with DisplayPort 1.4, Power Delivery up to 90 W)</li> <li>4 x SuperSpeed USB 5Gbps (USB 3.2 Gen1) downstream port</li> <li>1 x RJ45 port</li> </ul>
<b>HDCP SUPPORT</b>	HDMI HDCP 1.4, DP HDCP 1.4	HDMI HDCP 1.4, DP HDCP 1.4	HDMI HDCP 1.4, DP HDCP 1.4
<b>ADJUSTABILITY</b>	Height adjustable (150 mm) Tilt (-5° to 21°) Swivel (-45° to 45°) Pivot (-90° to 90°)	Height adjustable (150 mm) Tilt (-5° to 21°) Swivel (-45° to 45°) Pivot (-90° to 90°)	Height adjustable (150 mm) Tilt (-5° to 21°) Swivel (-45° to 45°) Pivot (-90° to 90°)
<b>SECURITY</b>	Security lock slot (cable lock sold separately)	Security lock slot (cable lock sold separately)	Security lock slot (cable lock sold separately)
<b>FLAT PANEL MOUNT INTERFACE</b>	VESA (100 mm)	VESA (100 mm)	VESA (100 mm)
<b>AC INPUT VOLTAGE/FREQUENCY/CURRENT</b>	100 VAC to 240 VAC / 50 Hz or 60 Hz ± 3 Hz / 2 A (typical)	100 VAC to 240 VAC / 50 Hz or 60 Hz ± 3 Hz / 2 A (typical)	100 VAC to 240 VAC / 50 Hz or 60 Hz 2.3 A (maximum)
<b>POWER CONSUMPTION (OPERATIONAL)</b>	0.3 W (Off mode) <sup>10</sup> 0.3 W (Standby mode) <sup>10</sup> 20 W (On mode) <sup>10</sup> 170 W (Max.) <sup>11</sup>	0.3 W (Off mode) <sup>10</sup> 0.3 W (Standby mode) <sup>10</sup> 26 W (On mode) <sup>10</sup> 175 W (Max.) <sup>11</sup>	0.3 W (Off Mode) <sup>10</sup> 0.3 W (Standby Mode) <sup>10</sup> 29.90 W (On Mode) <sup>10</sup> 183 W (Max.) <sup>11</sup>
<b>POWER CONSUMPTION STAND BY/SLEEP</b>	Less than 0.3W	Less than 0.3W	Less than 0.3W
<b>HEIGHT WITH STAND</b>	496.11 mm (19.53 in.)	535.20 mm (21.07 in.)	617.15 mm (24.30 in.)
<b>WIDTH WITH STAND</b>	537.80 mm (21.17 in.)	611.60 mm (24.08 in.)	712.42 mm (28.05 in.)
<b>DEPTH WITH STAND</b>	179.57 mm (7.07 in.)	190.10 mm (7.48 in.)	230.10 mm (9.06 in.)
<b>WEIGHT (PANEL ONLY - FOR VESA MOUNT/ NO CABLES)</b>	3.92 kg (8.64 lb)	5.07 kg (11.18 lb)	7.06 kg (15.56 lb.)
<b>WEIGHT (MONITOR AND CABLES WITH STAND)</b>	5.98 kg (13.18 lb)	7.34 kg (16.18 lb)	11.70 kg (25.79 lb.)
<b>WEIGHT (WITH PACKAGING)</b>	7.97 kg (17.57 lb)	9.78 kg (21.56 lb)	15.32 kg (33.77 lb.)

## P SERIES MONITORS

# P2423DE, P2723DE, P3223DE

### DELL 24 USB-C HUB MONITOR - P2423DE TECHNICAL SPECIFICATION

**STANDARD SERVICE PLAN** 3 Years Advanced Exchange Service and Limited Hardware Warranty

**OPTIONAL SERVICE PLAN** Dell ProSupport

#### ENVIRONMENTAL COMPLIANCE

- ENERGY STAR® certified monitor
- EPEAT® registered where applicable. EPEAT registration varies by country. See [www.epeat.net](http://www.epeat.net) for registration status by country.
- RoHS-compliant
- TCO Certified & TCO Certified Edge
- BFR/PVC free monitor (excluding external cables)
- Meets NFPA 99 leakage current requirements
- Arsenic-free glass and Mercury-free for the panel only

#### WHAT'S INCLUDED

- Monitor with stand
- 1 x Power cable
- 1 x DisplayPort to DisplayPort cable (1.8 m)
- 1 x SuperSpeed USB 10Gbps (USB 3.2 Gen2) Type-C to Type-C upstream cable (C-C cable) (1 m)
- 1 x SuperSpeed USB 5Gbps (USB 3.2 Gen1) Type-C to Type-A upstream cable (C-A cable) (1.8 m)
- 1 x Cable tie
- Quick Setup Guide
- Safety and regulatory information

### DELL 27 USB-C HUB MONITOR - P2723DE TECHNICAL SPECIFICATION

3 Years Advanced Exchange Service and Limited Hardware Warranty

Dell ProSupport

- ENERGY STAR® certified monitor
- EPEAT® registered where applicable. EPEAT registration varies by country. See [www.epeat.net](http://www.epeat.net) for registration status by country.
- RoHS-compliant
- TCO Certified & TCO Certified Edge
- BFR/PVC free monitor (excluding external cables)
- Meets NFPA 99 leakage current requirements
- Arsenic-free glass and Mercury-free for the panel only

- Monitor with stand
- 1 x Power cable
- 1 x DisplayPort to DisplayPort cable (1.8 m)
- 1 x SuperSpeed USB 10Gbps (USB 3.2 Gen2) Type-C to Type-C upstream cable (C-C cable) (1 m)
- 1 x SuperSpeed USB 5Gbps (USB 3.2 Gen1) Type-C to Type-A upstream cable (C-A cable) (1.8 m)
- 1 x Cable tie
- Quick Setup Guide
- Safety and regulatory information

### DELL 32 USB-C HUB MONITOR - P3223DE TECHNICAL SPECIFICATION

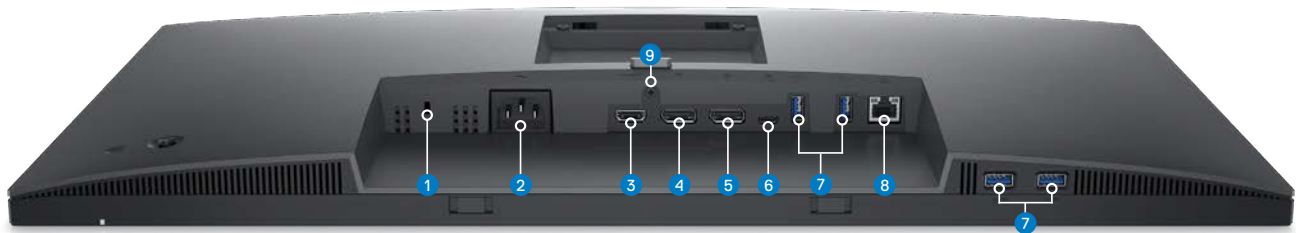
3 Years Advanced Exchange Service and Limited Hardware Warranty

Dell ProSupport

- ENERGY STAR® certified monitor
- EPEAT® registered where applicable. EPEAT registration varies by country. See [www.epeat.net](http://www.epeat.net) for registration status by country.
- RoHS-compliant
- TCO Certified & TCO Certified Edge
- BFR/PVC free monitor (excluding external cables)
- Meets NFPA 99 leakage current requirements
- Arsenic-free glass and Mercury-free for the panel only

- Monitor with stand
- 1 x Power cable
- 1 x DisplayPort to DisplayPort cable (1.8 m)
- 1 x SuperSpeed USB 10Gbps (USB 3.2 Gen2) Type-C to Type-C upstream cable (C-C cable) (1 m)
- 1 x SuperSpeed USB 5Gbps (USB 3.2 Gen1) Type-C to Type-A upstream cable (C-A cable) (1.8 m)
- 1 x Cable tie
- Quick Setup Guide
- Safety and regulatory information

## PORTS AND SLOTS



- Security lock slot\*\*\*
- Power connector
- HDMI port

- DisplayPort (in)
- DisplayPort (out)
- USB-C Upstream port

- USB 5Gbps (USB 3.2 Gen 1) Type-A Downstream port (4)
- RJ45 port
- Stand lock

# P2423DE, P2723DE, P3223DE

## Steadfast reliability

As the No. 1 monitor company worldwide\*, we take pride in our unyielding commitment to quality and the utmost in customer satisfaction.



### Premium Panel Exchange

Dell Premium Panel Exchange<sup>12</sup> allows a free monitor replacement during the Limited Hardware Warranty<sup>13</sup> period, even if only one bright pixel is found.

### Advanced Exchange Service

Your monitor comes with a 3-year Advanced Exchange Service<sup>14</sup> so that if a replacement becomes necessary, it will be shipped to you the next business day during your 3-year Limited Hardware Warranty.<sup>13</sup>

### ProSupport

Upgrade to 24x7 specialized technical phone support with the Dell ProSupport option.<sup>15</sup>

\* Dell monitors are #1 Worldwide for 8 consecutive years (2013, Q2 to 2021, Q3)! Source: IDC Worldwide Quarterly PC Monitor Tracker, Q3, 2021.

\*\* Dell Power Sync on your Dell USB-C Monitor is a feature that launches your system, even when your laptop lid is closed. It is currently available on select Dell PCs only. Please make sure to check your Dell PC to ensure compatibility of this feature.

\*\*\* Based on Kensington Security Slot™

1 MAC Address pass-through functionality is tested to work with most Dell PC systems. Functionality on non-Dell systems may vary

2 Based on Principled Technologies Report commissioned by Dell, "Improve productivity with the new Dell P Series monitors in a dual-display configuration", November 2018, compared to an older model in single-display configuration. Actual results will vary. Full report: [https://www.principledtechnologies.com/Dell/P2419H\\_monitor\\_productivity\\_1118.pdf](https://www.principledtechnologies.com/Dell/P2419H_monitor_productivity_1118.pdf)

3 Dell adheres to standard USB-C specifications and protocol. Functionality with non-Dell USB-C systems may vary.

4 The power sync feature on this Dell USB-C Monitor enables start up and wake-on-demand on compatible Dell PCs. Please check your Dell PC to ensure support of this feature.

5 Based on Dell analysis of battery life usage model calculations, Nov. 2020. Results vary depending on use, operating conditions and other factors.

6 By weight of the total weight of plastic parts in product. Excludes printed circuit boards, labels, cables, connectors, electronic components, optical components, ESD components, EMI components adhesives, and coatings.

7 EPEAT registered where applicable. EPEAT registration varies by country. See [www.epeat.net](http://www.epeat.net) for registration status by country.

8 The outer box/corrugate cushion packaging and recycled fibers in Dell commercial monitor packaging (excluding D-series) are made from corrugate and virgin cardboard materials. Excludes foam cushioning and plastic bags.

9 Enabled by Dell Display Manager

10 As defined in EU 2019/2021 and EU 2019/2013.

11 Max brightness and contrast setting with maximum power loading on all USB

12 Applicable to Dell UltraSharp, P Series, and C Series desktop monitors.

13 For copy of Ltd Hardware Warranty, write to Dell USA LP, Attn: Warranties, One Dell Way, Round Rock, TX 78682 or see <https://www.dell.com/warranty>.

14 Advanced Exchange: Dell will send you a replacement monitor the next business day in most cases if deemed necessary after phone/online diagnosis. Shipping times may vary by location and for monitors 55" and above. Fee charged for failure to return defective unit. See [dell.com/servicecontracts/global](http://dell.com/servicecontracts/global).

15 Availability varies, please visit [www.dell.com/support](http://www.dell.com/support) for details. In some countries, hours for in-region support may vary. Support after local business hours may be provided in a language other than the local language.

Technical specifications subject to change without prior notice. Product availability varies by country. Please contact your Dell representative for more information.

© 2022 Dell Inc. or its subsidiaries. All rights reserved. Dell Technologies, Dell, EMC, Dell EMC and other trademarks are trademarks of Dell Inc. or its subsidiaries. Other trademarks may be trademarks of their respective owners. USB Type-C® and USB-C® are registered trademarks of USB Implementers Forum.